

## OFF-ROAD REGULATIONS\*

The following Regulations will be enforced:

### 300:35-23-1. Designated areas

In the interest of public safety, there shall be no four-wheel vehicles, off-road vehicles or all-terrain vehicles on GRDA lands except in designated areas. Operators of such vehicles are subject to federal and state laws and GRDA rules.

### 300:35-23-2. Passengers prohibited

Passengers are only allowed on three (3) wheelers, four (4) wheelers, or motorcycles when the manufacturer has equipped the vehicle for such passenger which includes a separate seat and foot support.

### 300:35-23-3. Low gear required

Low gear only except on trails posted at speed limits in excess of five (5) MPH.

### 300:35-23-4. Racing prohibited

No racing on GRDA property is allowed except as permitted by a sanctioned event permit.

### 300:35-23-5. Lights required

All vehicles, including motorcycles, must be equipped with a working dimmable front headlight and working rear lights if operating between one-half hour before sunset and one-half hour after sunrise. Any vehicle utilizing light bars shall turn them off upon the approach of another vehicle.

Source: Title 300. Grand River Dam Authority, Chapter 35. Lake Rules, Subchapter 23. Four-Wheel Vehicles, Off-Road Vehicles and All Terrain Vehicles

### 300:35-23-6. Roll bar, helmet, and seat belt requirements

Dune buggies and 4x4 vehicles must have a ROPS sufficient to support the weight of the vehicle and must have a seat belt for each passenger.

### 300:35-23-7. No liability

GRDA shall not be liable and hereby disclaims any responsibility for any and all injuries and accidents, up to and including death, which may occur as a result of participating in off-road activities. Each driver and passenger rides at his/her own risk and assumes all risks of the activity.

### 300:35-23-9. Signage

Drivers shall obey all signs posted on GRDA land including areas that are off limits and speed designations.

### 300:35-23-10. Penalty

- (a) GRDA Police and Compliance Officers may verbally order any person that is violating these rules to immediately exit the lands of GRDA.
- (b) Additionally, any person, after notice and opportunity to be heard in accordance with Subchapter 21 herein, may be banned from the lands of GRDA for a period of time up to, and including, ninety (90) days.

July 22, 2019

## EMERGENCY 911



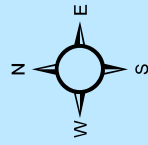
**The Grand River Dam Authority welcomes you to enjoy the trails, hills and rock formations that are open to the public for your off-road enjoyment. As a guest on our property, we ask that you abide by these regulations in order to ensure the enjoyment and safety of all.**

- GRDA Police Officers will be patrolling and enforcing the following rules, as well as applicable State laws on the state properties.
- Consuming distilled spirits in public is a violation of Oklahoma state law Consumption of alcoholic beverages, beer and wine will not be tolerated while operating or riding in a vehicle, motorcycle, or ATV. Operating a vehicle, motorcycle, or ATV while under the influence of alcohol or drugs will not be tolerated.
- Helmets must be worn by all operators AND passengers who are under the age of eighteen (18) on any motorcycles and ATV's.
- Children who are required by law to be in a properly installed and secured child seat based on age and size, and are in a vehicle with a ROPS, may be properly secured in a child seat without a helmet.
- There are some areas of the GRDA properties that are restricted, such as immediately below the dam & spillways. Areas that are covered by Rip-Rap are also considered restricted areas, as well as areas marked by signs and barricades. DO NOT ENTER or attempt to drive in these areas or those marked as Restricted Area, or you will be subject to arrest for trespassing.



# Off Road Trails

Grand River Dam Authority



Disney

Emergency Location 5

Emergency Location 4

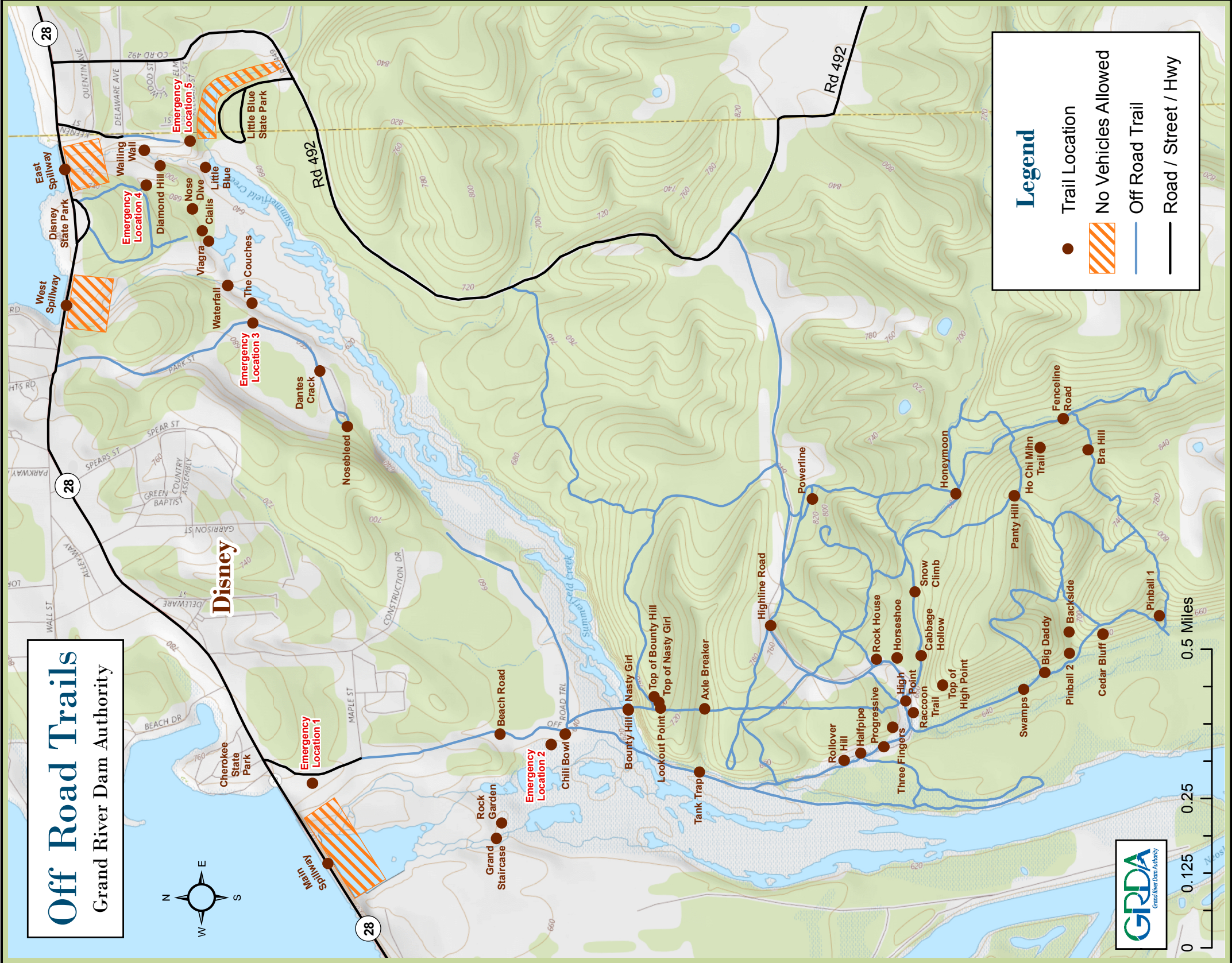
Emergency Location 3

Emergency Location 1

Emergency Location 2

## Legend

- Trail Location
- ▨ No Vehicles Allowed
- Off Road Trail
- Road / Street / Hwy



For more information about Off-Road Trails on Grand Lake, visit [www.grda.com](http://www.grda.com).

**EMERGENCY: 911**

• POLICE: 918-256-0911

• GRDA Ecosystems & Education Center, Hwy 28, Langley, OK