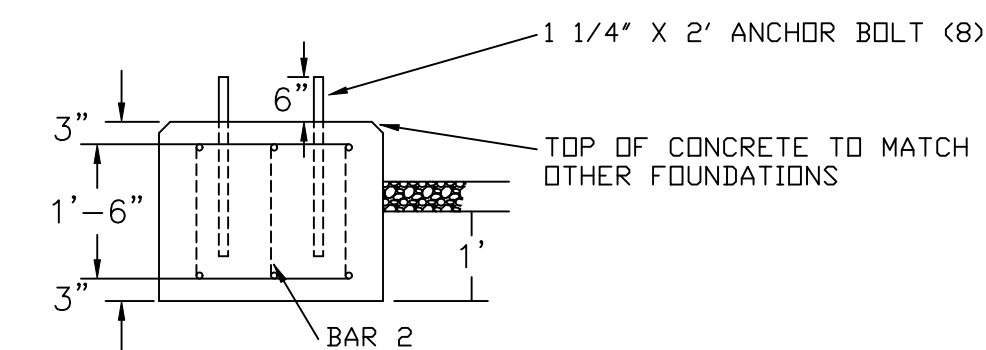
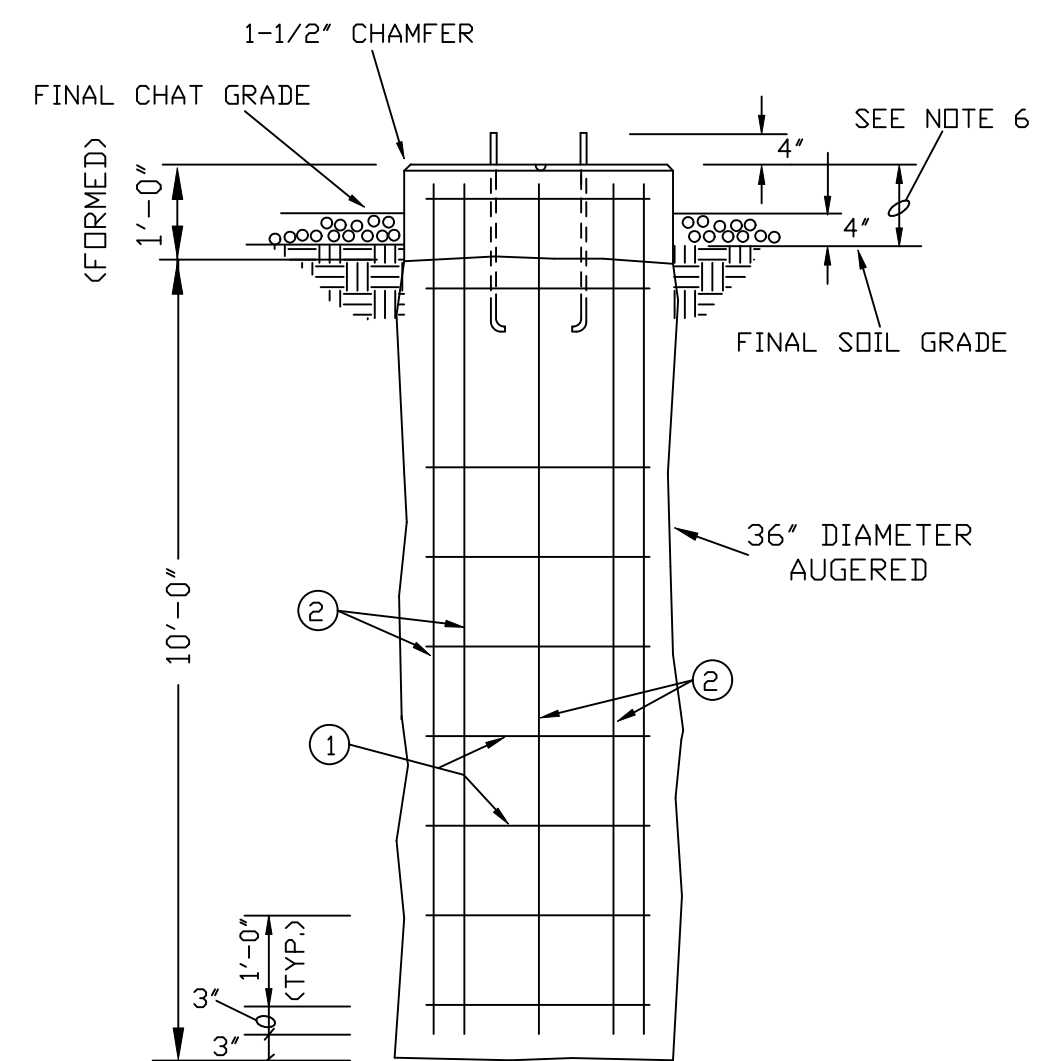
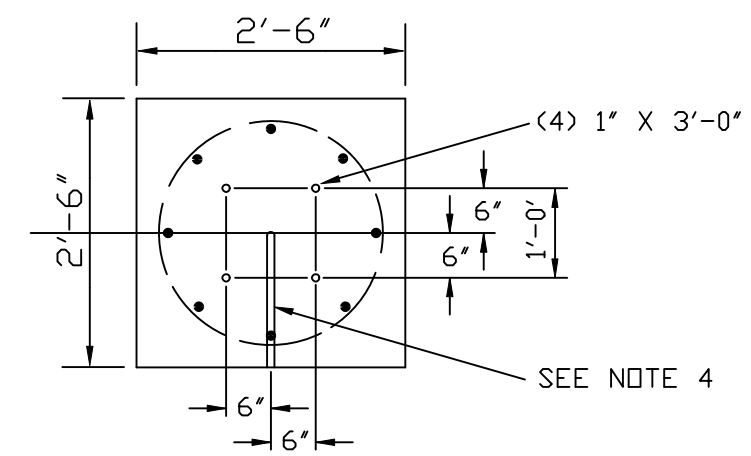


CCVT STAND



2'		1'-6" 4"		1'-6"	
NO. 6 (BAR 1)		NO. 6 (BAR 2)		NO. 6 (BAR 3)	
QUANTITY	WEIGHT	QUANTITY	WEIGHT	QUANTITY	WEIGHT
24	#6	12	#6	6	#6

THIS TABLE IS FOR CCVT FOUNDATION

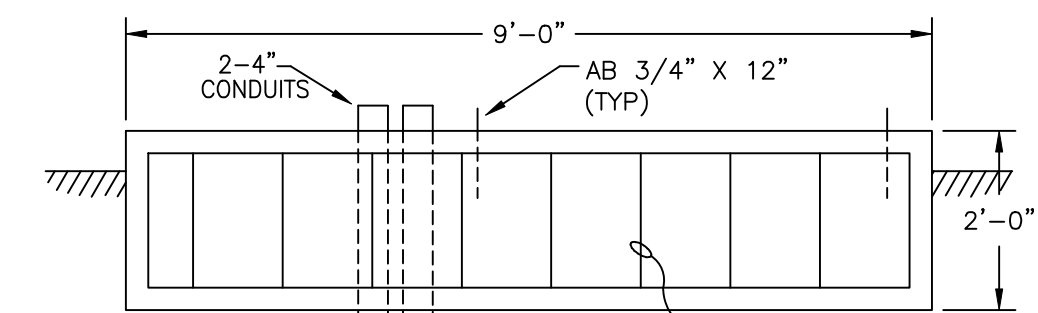
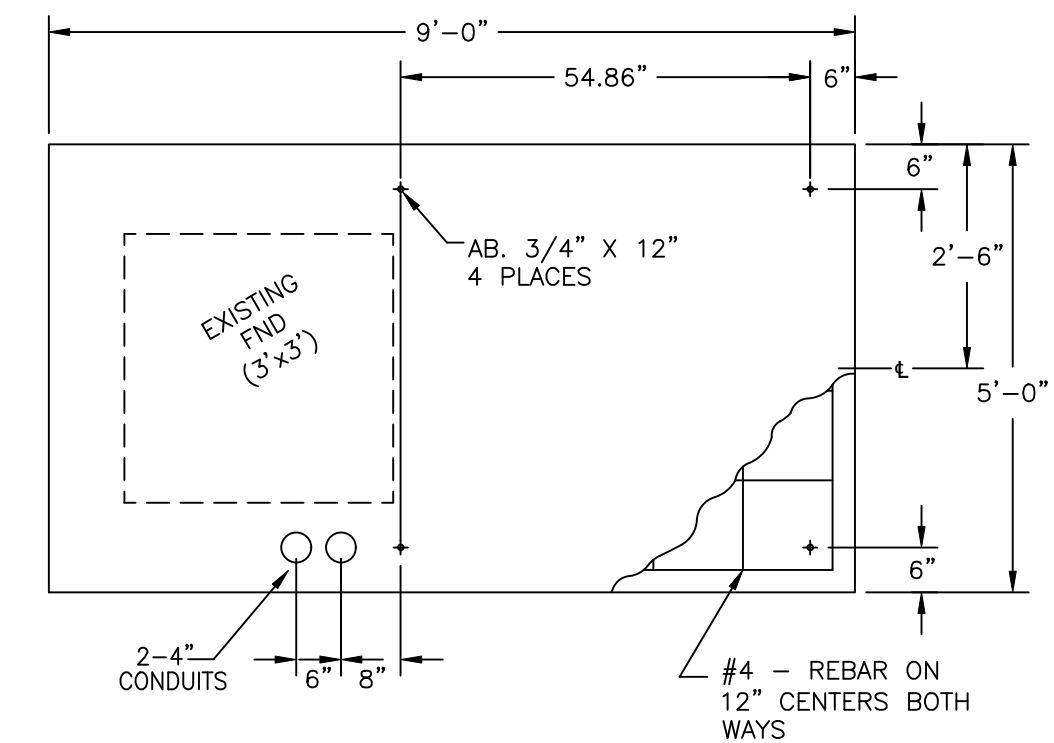


FOUNDATION F-SW

69KV CIRCUIT SWITCHER STAND  
(2 REQUIRED)

23"			10'-6"			CONCRETE
NO. 3 HOOP (BAR 1)			(BAR 2)			
QUANTITY	WEIGHT	SIZE	QUANTITY	SIZE	WEIGHT	CU. YDS.
12		#3	8	#6		2.05

THIS TABLE IS FOR FND. F-SW, F-SWDE, & F-BS



NOTE: TOP OF FOUNDATION TO MATCH EXISTING PADS.

SB 9x5 (TWO PLACES)

BKR PADS FOR 10870 AND 670

NOTES:

1. MAINTAIN AT LEAST 3" BETWEEN BAR AND FACE OF CONCRETE.
2. ALL FOOTING EDGES ABOVE GROUND WILL HAVE 1-1/2" CHAMFER UNLESS OTHERWISE NOTED.
3. DEPTH DIMENSION IS PROPOSED FOR INSTALLATIONS ON UNSTABLE SURFACES. ALL FOOTINGS MUST EXTEND TO SOLID UNDISTURBED EARTH.
4. FINISH THE TOP WITH A 3/4" HALFROUND (CURVED-SIDE DOWN) FROM THE CENTER TO THE EDGE TO EFFECT A WATER DRAINAGE GROOVE.
5. ALL MATERIAL QUANTITIES ARE PER FOOTING AS SHOWN.
6. THIS DIMENSION VARIES BECAUSE OF GRADE. AVERAGE IS 10" ABOVE GRADE. SEE FOUNDATION LAYOUT.
7. HOLD ALL FOUNDATIONS UNTIL RECEIPT OF STEEL DWGS.

REFERENCE DRAWINGS:

- S351PG30 FOUNDATION PLAN
- ED-10 CONDUIT LAYOUT (CITY)

DESCRIPTION: MODIFIED BKR FOUNDATION						GRAND RIVER DAM AUTHORITY STILLWATER KINZIE SUBSTATION S351 STILLWATER, OKLAHOMA 138/69KV			
2	RF014-00635		BA	TT		FOUNDATION DETAILS			
DESCRIPTION: ADDED CCVT FOUNDATION									
1	RF014-00611	29AUG14	BA	RC	BA	ENGINEER: BA SCALE: 1/2"=1'-0" DATE: 29AUG14 DRAWN BY: RC DRAWING NO. S351PG32 CHECKED BY: BA P.O. BOX 669 CHOUTEAU, OK 74337 APPROVED BY: OLD DRAWING NO.: D-2061			
REV NO.	JOB NO.	DATE	DESIGN ENGR	DFTR	DESIGN CHECK				