

Date of Issuance: 10/29/2024

¹Solicitation No. RFQ 2052 REBID

Purchase Request No. 4752

Clarification or Amendment No. 1

Solicitation due date and hours of offers is changed: No Yes, to: 11/15/2024 @ 2:00 PM CST/CDT

This document shall serve as official notice of ²Clarification or ³Amendment to the Solicitation identified above. Such notice is being provided to all vendors to which the original solicitation was sent. When a change(s) made to the solicitation materially impact a priced offer by vendors, vendors are to ensure that priced offer is accurate and reflects a change(s) identified in the amendment.

ISSUED BY:

Grand River Dam Authority
Purchasing Unit
PO Box 669
Chouteau, OK 74337

Paul Proctor
Contracting and Acquisitions Agent
918-500-0198
Phone Number
paul.proctor@grda.com
E-Mail Address

Description of Amendment or Clarification:

a. This is to incorporate the following (this box expands based on size of text):

The bid due date has been extended to 11/15/24 @ 2:00 PM CST.
The Q&A deadline has been extended to 11/13/24 @ 2:00 PM CST.

We received some questions which needed to be addressed via an amendment. Please see below:

- 1) Are any of the generators classified as "Life Safety"? If so, this will require every third year to have a documented 4-Hr Load Bank Run.
It is our understanding that NFPA best practice recommendation does not have a requirement for level 1 "Life Safety". All sites should be considered level 2 with annual load banks.
- 2) The Onans on the repeater sites, are we quoting them with them being Onans or as the Generacs?
We have both. At this time most are Onans, but we are working on switching these over to the smaller Generacs. This will likely take a few years to complete, however.
- 3) Can a sight visit be scheduled to gather engine & filter information?
Please see the attached pictures of the provided units. Hopefully this is sufficient to provide the needed information. If a site visit is still desired, GRDA will need to schedule an open date & time for all vendors to be able to attend at the same time in order to maintain a fair competitive bid process. Please let us know if a site visit is still needed.

1. Solicitation means a request or invitation by GRDA for a vendor to submit a priced offer to sell acquisitions to GRDA. A solicitation may be a Request for Quote (RFQ), an Invitation to Bid (ITB), or a Request for Proposal (RFP).
2. Clarification to a solicitation means an additional explanation of all or part of a solicitation that does not change, alter, or supplement the solicitation.
3. An amendment to a solicitation means a written change, addition, correction, or revision to a solicitation.

4) Do you have addresses for the locations?

We do not have addresses available, however we can provide a Google Earth link which includes pins with GPS coordinates to all of the sites. Please see below.



GRDA Map.kmz

b. All other terms and conditions remain unchanged.

1. Solicitation means a request or invitation by GRDA for a vendor to submit a priced offer to sell acquisitions to GRDA. A solicitation may be a Request for Quote (RFQ), an Invitation to Bid (ITB), or a Request for Proposal (RFP).
2. Clarification to a solicitation means an additional explanation of all or part of a solicitation that does not change, alter, or supplement the solicitation.
3. An amendment to a solicitation means a written change, addition, correction, or revision to a solicitation.

WIX[®]

FILTERS

51794

Filtros a huile / Filtro de aceite
Heavy Duty Filter™





IMPORTANT ENGINE INFORMATION
CUMMINS POWER GENERATION
1400 73rd Ave. NE
Minneapolis, MN 55432

Made in U.S.A.

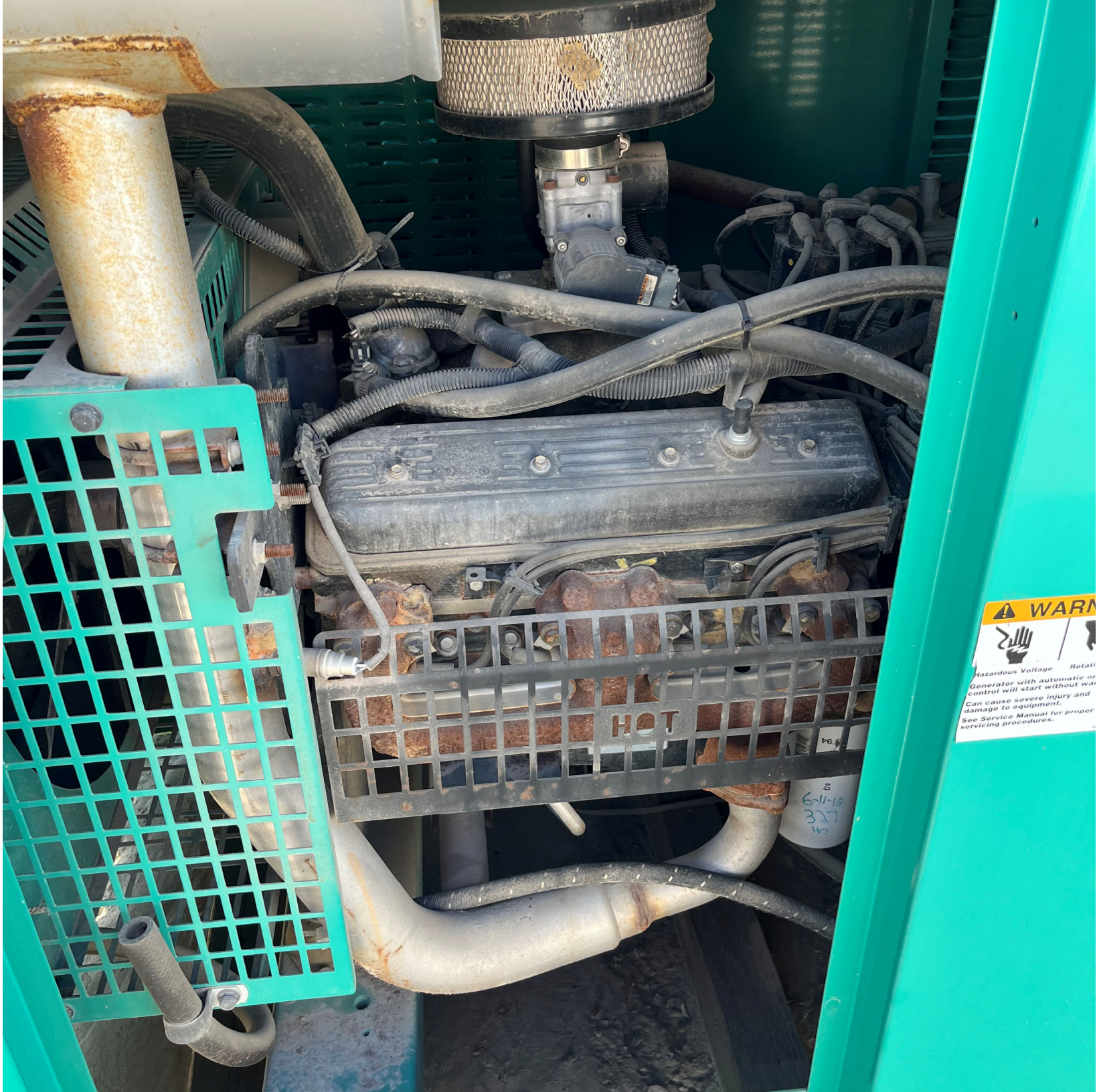
THIS ENGINE COMPLIES WITH 2012 U.S. EPA
REGULATIONS FOR STATIONARY S.I. ENGINES
THIS GM 5.0L ENGINE IS CERTIFIED TO OPERATE ON
NATURAL GAS OR LPG AT CONSTANT SPEED, IN

EPA FAMILY: CCEXB05.0GDA

ENGINE NO: J120407469
DISPLACEMENT: 305/5.0 (C.I.D./L.)
TIMING: 30/26 B.T.D.C (NG/LPG)
SPARK PLUG GAP: 0.030 INCH
FIRING ORDER: 1-8-4-3-6-5-7-2
DATE OF MFG: 10/2012
E.C.S.: HO2S/FTV/CLS

REFER TO OPERATOR'S MANUAL FOR LUBRICATION
OIL SPECIFICATIONS AND MAINTENANCE SCHEDULE

A026M616



⚠ WARNING



Hazardous Voltage Rotating Parts
Generator with automatic or manual control will start without warning. Can cause severe injury and damage to equipment. See Service Manual for proper servicing procedures.

6-11-18
327
HS



20:f8:5e:2f:6c:32

SSID: MLG35426

http://192.168.51.1

CONTAINS FCC ID: YOPGS2101M

CONTAINS IC: 9154A-GS2101M

GENERAC

MODEL: G0070422

SERIAL: 3004326022

ITEM NO: G0070422

PROD DATE: 20190219

VOLTS: 120/240 1 PHASE

LPV AMPS: 183.3/91.7 HZ 60

NG AMPS: 162.5/81.3 RPM 3,600

INSULATION CLASS: H 1.0 PF

CONTROLLER P/N: 10000003293

COUNTRY OF ORIGIN: US

DUTY RTG: **EMERGENCY**

X"D 0.174 X"D 0.107

RATED AMBIENT TEMP: 25° C

FOR STANDBY SERVICE

NEUTRAL FLOATING
UNBALANCED LOAD
CAPACITY

50 %

MANUF
LOC
1004

RAINPROOF ENCLOSURE



Intertek
4006399



SwRI ID No. 13204-01-01
Compliant with Clause (2)
of Section 4.14 of NFPA 37
LISTED BY: Southwest Research
Institute San Antonio, Texas



IMPORTANT ENGINE INFORMATION

GENERAC

GENERAC POWER SYSTEMS, INC

THIS ENGINE CONFORMS TO U.S. EPA REGULATIONS FOR 2019,
AND IS CERTIFIED FOR USE AS A STATIONARY EMERGENCY
ENGINE ONLY.

ENGINE FAMILY: KGNXB.9992ST

ENGINE DISPLACEMENT: 999 cc

THIS ENGINE IS CERTIFIED TO OPERATE ON NG. WHEN CONVERTED
TO LP, THE ENGINE FAMILY IS KGNXB.9992SL

REFER TO OWNERS MANUAL FOR FURTHER INFORMATION
INCLUDING MAINTENANCE SPECIFICATIONS, ADJUSTMENTS
AND PURCHASER/OWNER COMPLIANCE REQUIREMENTS.

M J M A M J J A S O N D Y R 1 8 1 0

10000038195 REV . B

GENERAC

INDUSTRIAL DUTY OIL

EXTENDED ENGINE LIFE • INCREASES EFFICIENCY

30% MORE FILTER

TO INSTALL: APPLY FILM OF OIL TO GASKET
UNTIL GASKET MAKES CONTACT WITH BASE
TO 1 TURN. START ENGINE AND CHECK FOR

OIL FILTER#070185E

