

WIX[®]

FILTERS

51794

Filtros a huile / Filtro de aceite
Heavy Duty Filter™





IMPORTANT ENGINE INFORMATION
CUMMINS POWER GENERATION
1400 73rd Ave. NE
Minneapolis, MN 55432

Made in U.S.A.

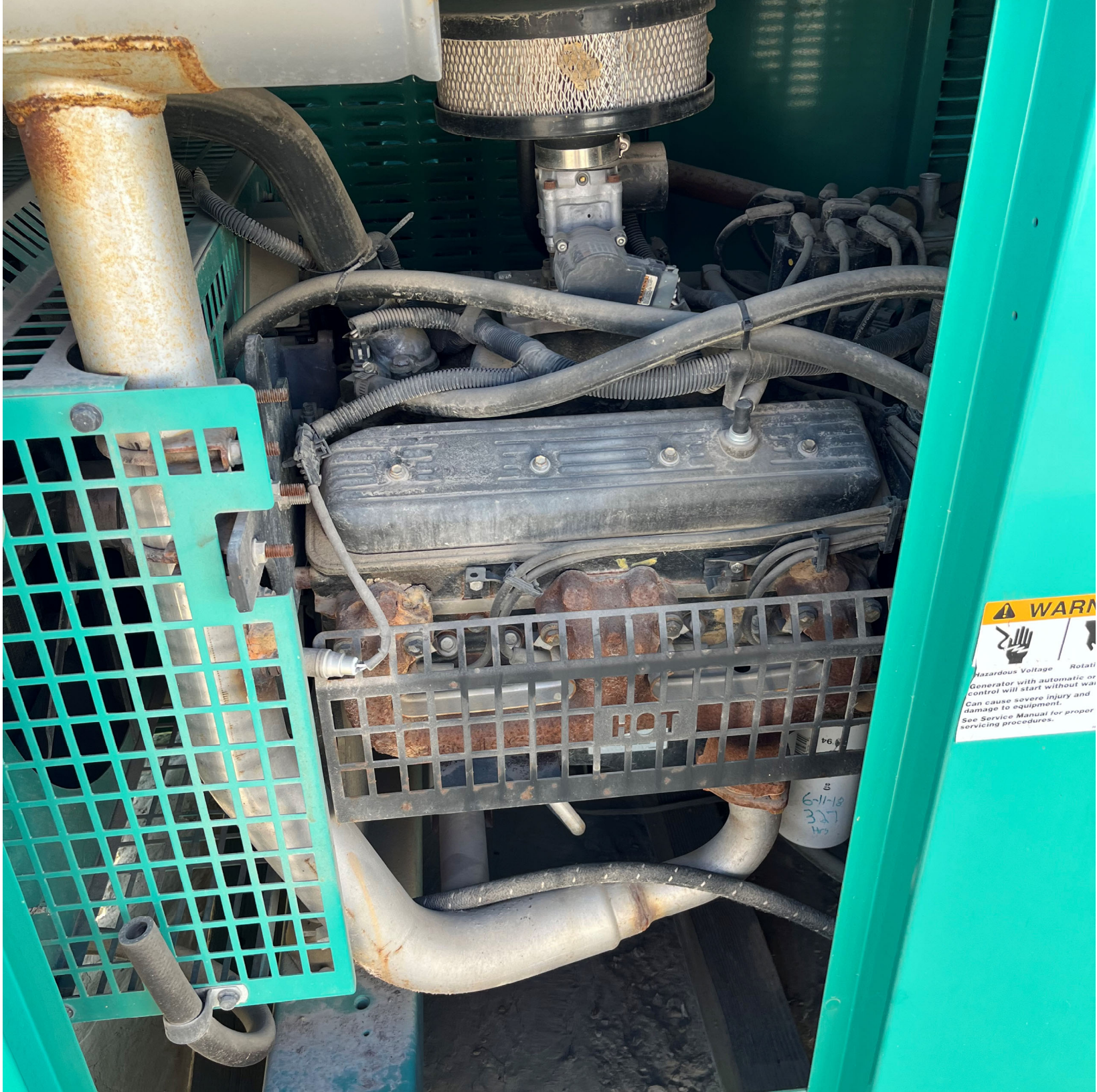
THIS ENGINE COMPLIES WITH 2012 U.S. EPA
REGULATIONS FOR STATIONARY S.I. ENGINES
THIS GM 5.0L ENGINE IS CERTIFIED TO OPERATE ON
NATURAL GAS OR LPG AT CONSTANT SPEED, IN

EPA FAMILY: CCEXB05.0GDA

ENGINE NO: J120407469
DISPLACEMENT: 305/5.0 (C.I.D./L.)
TIMING: 30/26 B.T.D.C (NG/LPG)
SPARK PLUG GAP: 0.030 INCH
FIRING ORDER: 1-8-4-3-6-5-7-2
DATE OF MFG: 10/2012
E.C.S.: HO2S/FTV/CLS

REFER TO OPERATOR'S MANUAL FOR LUBRICATION
OIL SPECIFICATIONS AND MAINTENANCE SCHEDULE

A026M616



⚠ WARNING



Hazardous Voltage Rotating Parts
Generator with automatic or manual control will start without warning. Can cause severe injury and damage to equipment. See Service Manual for proper servicing procedures.

6-11-18
327
H3



20:f8:5e:2f:6c:32

SSID: MLG35426

http://192.168.51.1

CONTAINS FCC ID: YOPGS2101M

CONTAINS IC: 9154A-GS2101M

GENERAC

MODEL: G0070422

SERIAL: 3004326022

ITEM NO: G0070422

PROD DATE: 20190219

VOLTS: 120/240 1 PHASE

LPV AMPS: 183.3/91.7 HZ 60

NG AMPS: 162.5/81.3 RPM 3,600

INSULATION CLASS: H 1.0 PF

CONTROLLER P/N: 10000003293

COUNTRY OF ORIGIN: US

DUTY RTG: **EMERGENCY**

X"D 0.174 X"D 0.107

RATED AMBIENT TEMP: 25° C

FOR STANDBY SERVICE

NEUTRAL FLOATING
UNBALANCED LOAD
CAPACITY

50 %

MANUF
LOC
1004

RAINPROOF ENCLOSURE



Intertek
4006399



SwRI ID No. 13204-01-01
Compliant with Clause (2)
of Section 4.14 of NFPA 37
LISTED BY: Southwest Research
Institute San Antonio, Texas



IMPORTANT ENGINE INFORMATION

GENERAC

GENERAC POWER SYSTEMS, INC

THIS ENGINE CONFORMS TO U.S. EPA REGULATIONS FOR 2019,
AND IS CERTIFIED FOR USE AS A STATIONARY EMERGENCY
ENGINE ONLY.

ENGINE FAMILY: KGNXB.9992ST

ENGINE DISPLACEMENT: 999 cc

THIS ENGINE IS CERTIFIED TO OPERATE ON NG. WHEN CONVERTED
TO LP, THE ENGINE FAMILY IS KGNXB.9992SL

REFER TO OWNERS MANUAL FOR FURTHER INFORMATION
INCLUDING MAINTENANCE SPECIFICATIONS, ADJUSTMENTS
AND PURCHASER/OWNER COMPLIANCE REQUIREMENTS.

M J MAM J J A S O N D Y R 1 8 1 0

10000038195 REV . B

GENERAC

INDUSTRIAL DUTY OIL

EXTENDED ENGINE LIFE • INCREASES EFFICIENCY

30% MORE FILTER

TO INSTALL: APPLY FILM OF OIL TO GASKET
UNTIL GASKET MAKES CONTACT WITH BASE
TO 1 TURN. START ENGINE AND CHECK FOR

OIL FILTER#070185E

