

Clarification or Amendment of Solicitation

Date of Issuance: 3/30/26

¹Solicitation No. RFQ 3611

Purchase Request No. 8929

Clarification or Amendment No. 1

Solicitation due date and hours of offers is changed: No Yes, to: _____ CST/CDT

This document shall serve as official notice of ²Clarification or ³Amendment to the Solicitation identified above. Such notice is being provided to all vendors to which the original solicitation was sent. When a change(s) made to the solicitation materially impact a priced offer by vendors, vendors are to ensure that priced offer is accurate and reflects a change(s) identified in the amendment.

ISSUED BY:

Grand River Dam Authority
Purchasing Unit
PO Box 669
Chouteau, OK 74337

Paul Proctor
Contracting and Acquisitions Agent
918-500-0198
Phone Number
paul.proctor@grda.com
E-Mail Address

Description of Amendment or Clarification:

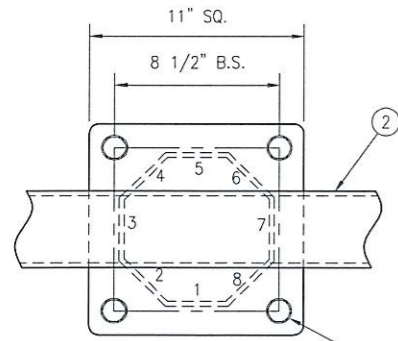
a. This is to incorporate the following (this box expands based on size of text):

During the Q&A process, a question was submitted requesting some additional detailed design drawings for each item. Some additional drawings have been provided to fulfill this request. See attached.

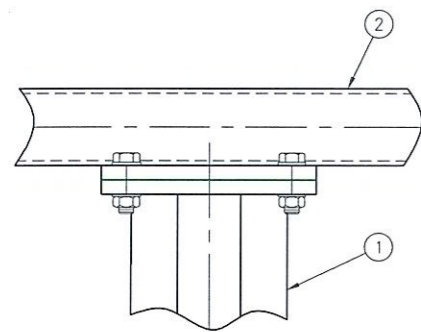
Please note that these drawings are reference/source drawings in support of the technical drawings already provided, and are not the exact requirements for what is being requested in the RFQ.

b. All other terms and conditions remain unchanged.

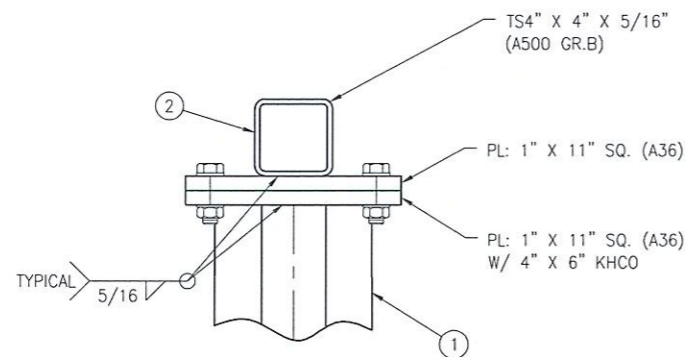
1. Solicitation means a request or invitation by GRDA for a vendor to submit a priced offer to sell acquisitions to GRDA. A solicitation may be a Request for Quote (RFQ), an Invitation to Bid (ITB), or a Request for Proposal (RFP).
2. Clarification to a solicitation means an additional explanation of all or part of a solicitation that does not change, alter, or supplement the solicitation.
3. An amendment to a solicitation means a written change, addition, correction, or revision to a solicitation.



(4) 3/4" X 3 1/2" HEX BOLTS (A325)
W/ (2) FLAT WASHER, (1) LOCK WASHER,
(1) HEX NUT PER BOLT

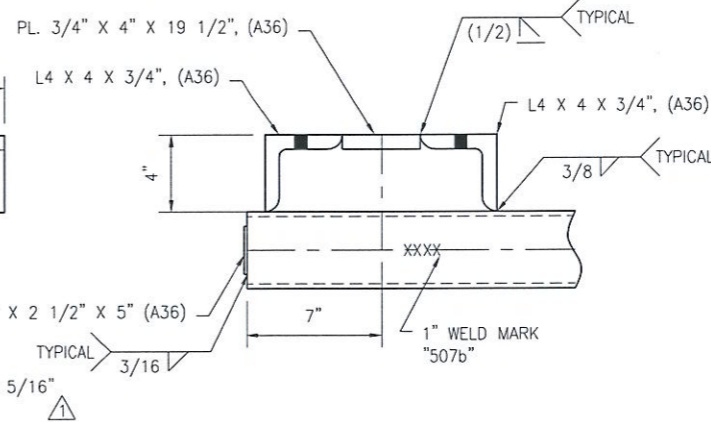
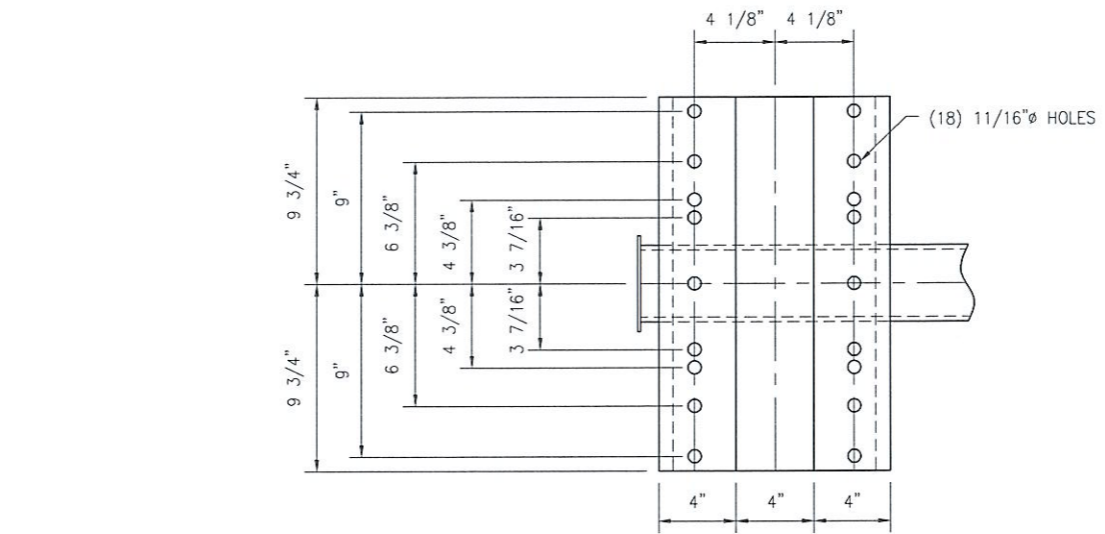


FLANGE DETAIL

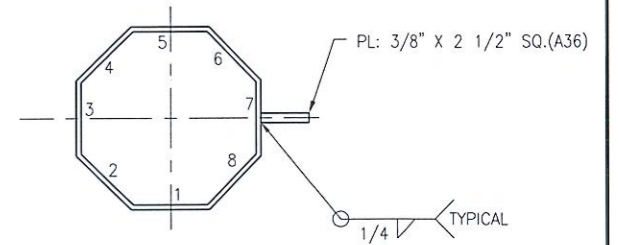


TS4" X 4" X 5/16"
(A500 GR.B)
PL: 1" X 11" SQ. (A36)
PL: 1" X 11" SQ. (A36)
W/ 4" X 6" KHCO

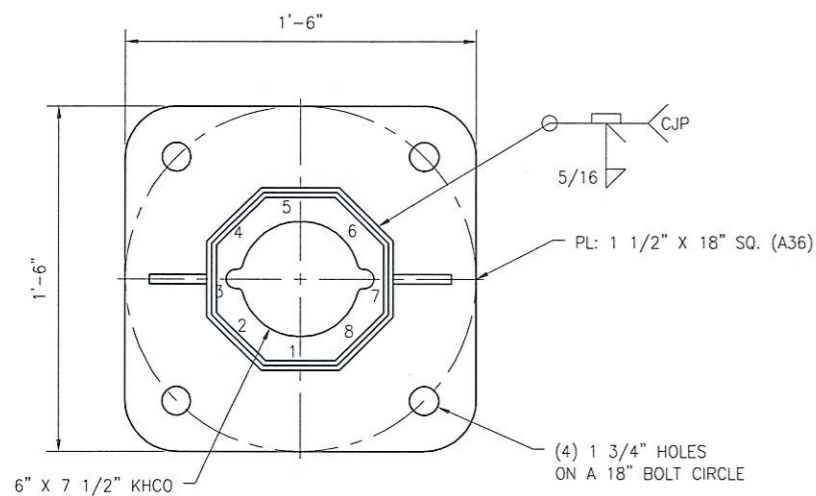
SWITCH MOUNT DETAIL



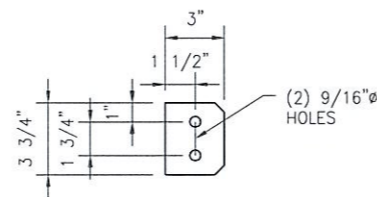
PL: 3/4" X 4" X 19 1/2", (A36)
L4 X 4 X 3/4", (A36)
L4 X 4 X 3/4", (A36)
PL: 3/16" X 2 1/2" X 5" (A36)
TS 4" X 4" X 5/16"
(A500 GR.B)
TYPICAL 5/16
TYPICAL 3/16
TYPICAL 1/2
TYPICAL 3/8
7"
1" WELD MARK
"507b"



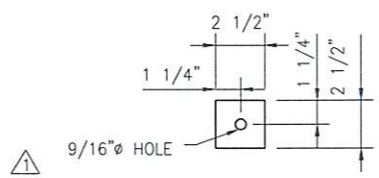
SECTION B - B



SECTION A - A



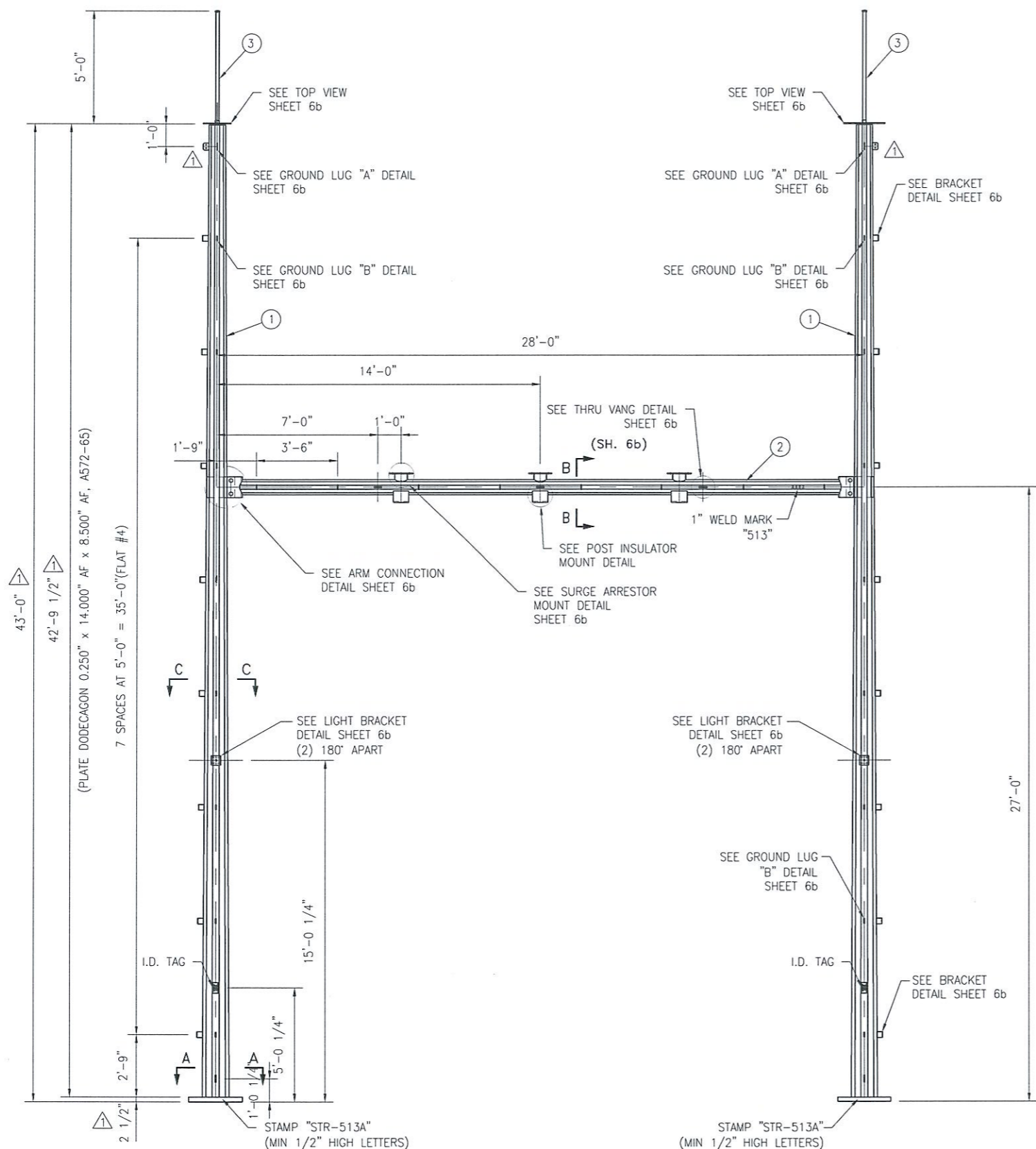
GROUND LUG "A"



GROUND LUG "B"

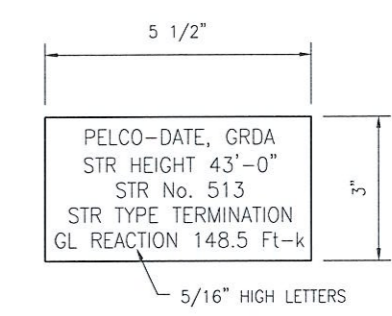
FOR RECORD ONLY
JUL 0 1 2010

		1501 INDUSTRIAL BLVD. CLAREMORE, OKLAHOMA 74017 PH: 918-283-4004 FAX: 918-283-4005 WWW.PELCOSTRUCTURAL.COM	
		CUSTOMER: HD SUPPLY UTILITIES	
AGENT:		DESCRIPTION: PO. NO.: 540378-00 PROJ. NO.: TONNECE SUBSTATION	
DRAWN BY: BO	CHECKED BY: JRS	APPROVED BY: JRS	DATE: 4/30/10
TITLE: GRAND RIVER DAM AUTHORITY 69kV THREE PHASE LOW SWITCH DISCONNECT STRUCTURE 507			
JOB NUMBER 2460	DRAWING NUMBER 246001b	SHEET NUMBER 1b OF 32	REV 1

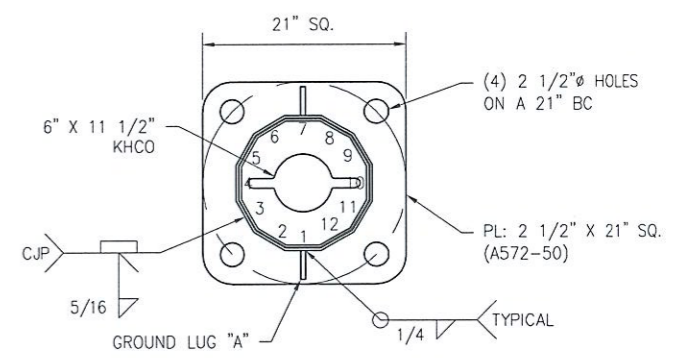


SHAFT TAPER: 0.12865 IN/FT

Bill Of Material					
Item	Qty: (1)	Mark No.	Description	Unit Weight	Total Weight
①	2	STR-513a	Shaft: 14" AF x 8 1/2" AF x 1 1/4" x 42' - 9 1 2" Lg.	1.704.0	3.408.0
②	1	STR-513b	Crossarm: 7" AF x 1 1/4" x 26' - 9" Lg.	781.0	781.0
③	2	STR-513c	Pipe: 2" Sch 40 x 5' - 0" Lg. w pipe cap	20.0	40.0
	8	Hardware	1 1/4" Dia x 3 3/4" Hex Bolt w HN. (2) FW & LW	3.1	24.8
				Total	4.253.8



ID TAG DETAIL



SECTION A - A

FOR RECORD ONLY
JUL 0 1 2010

- GENERAL NOTES:
1. ALL SEAM WELDS TO BE 60% PENETRATION EXCEPT AS NOTED.
 2. ALL LONGITUDINAL WELDS WITHIN 3" OF FLANGE AND BASEPLATE WELDS SHALL REQUIRE COMPLETE FUSION AND COMPLETE JOINT PENETRATION.
 3. ALL WELDING TO BE PER PELCO STANDARD 2.1.1.
 4. ALL QUALITY AND TOLERANCE PER PELCO STANDARD 2.1.2.

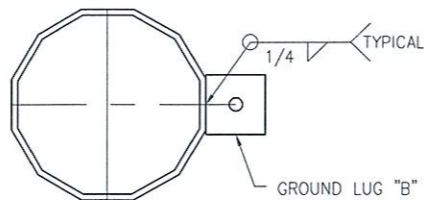
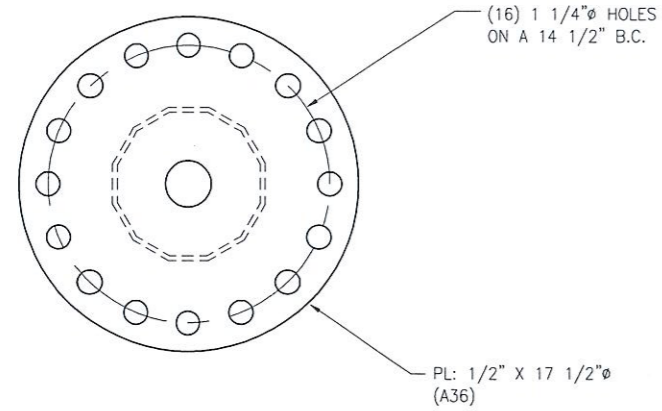
pelco
STRUCTURAL, L.L.C.

1501 INDUSTRIAL BLVD.
CLAREMORE, OKLAHOMA 74017
PH: 918-283-4004
FAX: 918-283-4005
WWW.PELCOSTRUCTURAL.COM

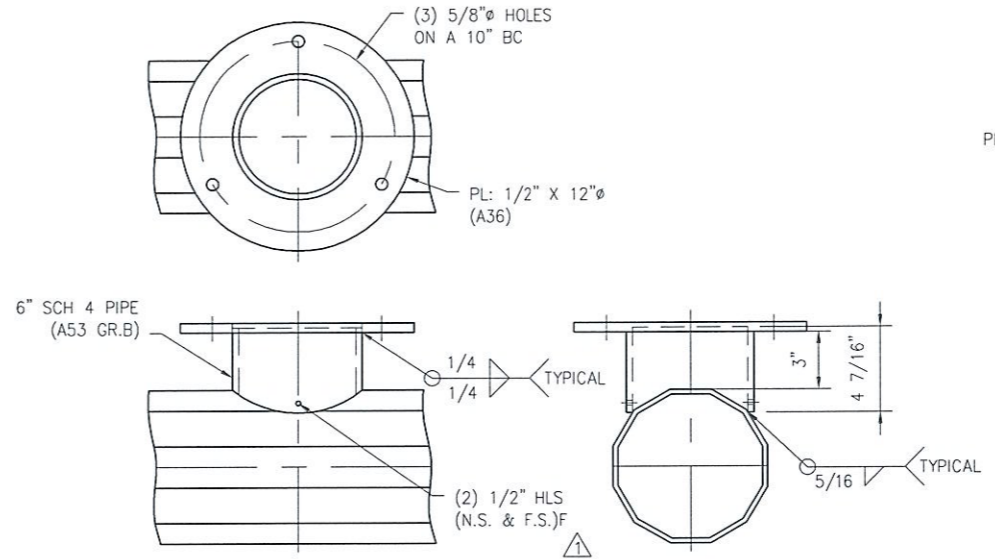
CUSTOMER:	HD SUPPLY UTILITIES		
AGENT:			
DESCRIPTION:	PO. NO.: 540378-00	PROJ. NO.:	TONNECE SUBSTATION
DRAWN BY:	BO	CHECKED BY:	JRS
		APPROVED BY:	JRS
		DATE:	4/30/10
TITLE:	GRAND RIVER DAM AUTHORITY 69kV H-FRAME LINE TERMINATION STRUCTURE 513		

1	BO	JRS	JRS	06/02/10	JOB NUMBER	DRAWING NUMBER	SHEET NUMBER	REV
REV	DRAWN	CHECKED	APPROVED	DATE	2460	246006a	6a OF 32	1

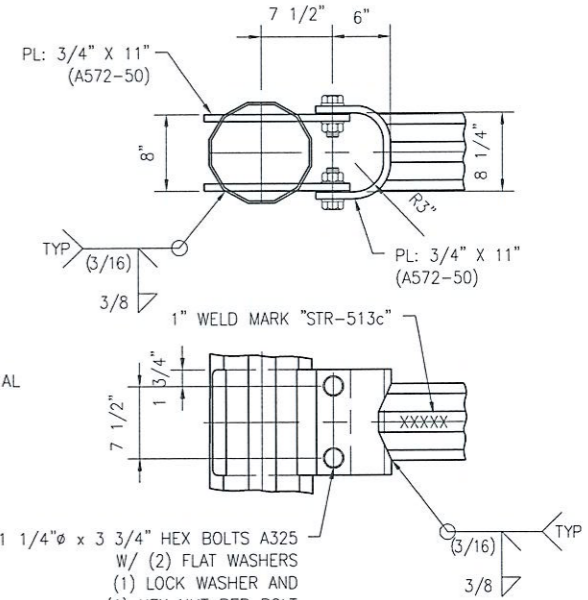
LAST SAVED BY: ANGHARDNER 6/11/2010 11:17 AM PLOTTED @ 1 SCALE BY: JRM/KCH 6/30/2010 3:35:50 PM



SECTION B - B



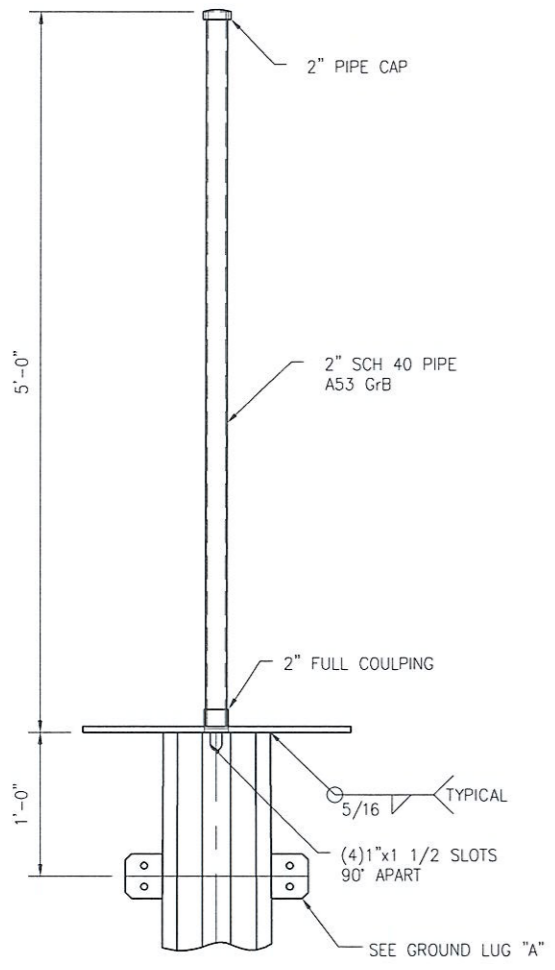
SURGE ARRESTER MOUNT DETAIL
(TYPICAL 3 PLACES)



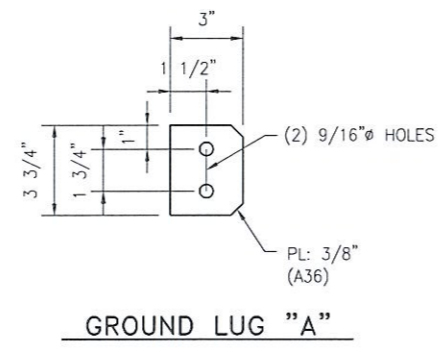
CROSSARM CONNECTION DETAIL

FOR RECORD ONLY
JUL 0 1 2010

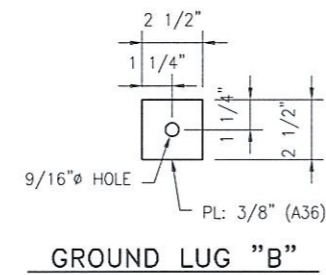
1 1/4" x 3 3/4" HEX BOLTS A325
W/ (2) FLAT WASHERS
(1) LOCK WASHER AND
(1) HEX NUT PER BOLT
(4) BOLTS PER ARM CONNECTION



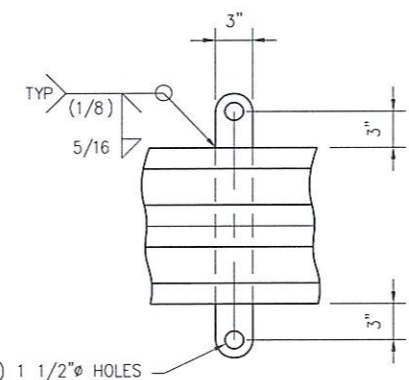
TOP VIEW



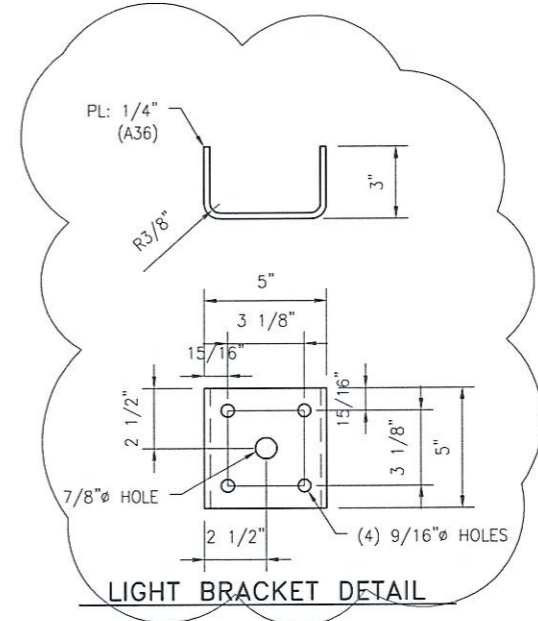
GROUND LUG "A"



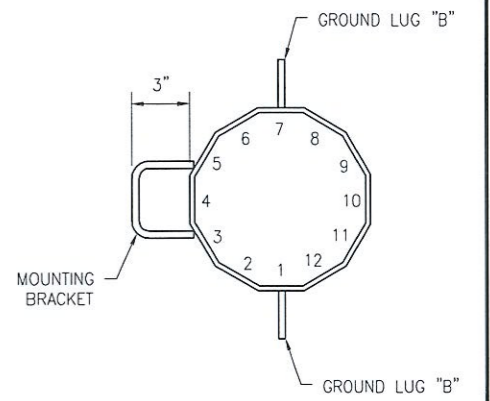
GROUND LUG "B"



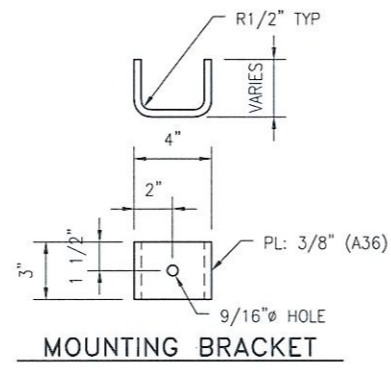
THRU VANG DETAIL



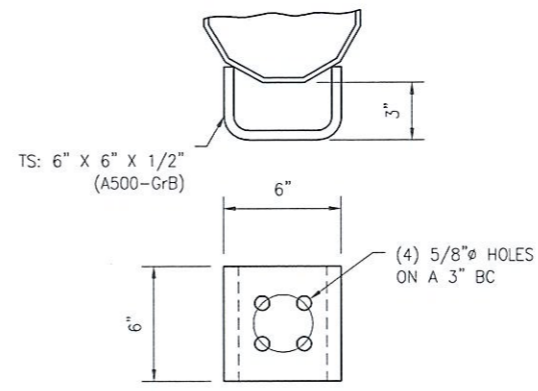
LIGHT BRACKET DETAIL



SECTION C - C



MOUNTING BRACKET

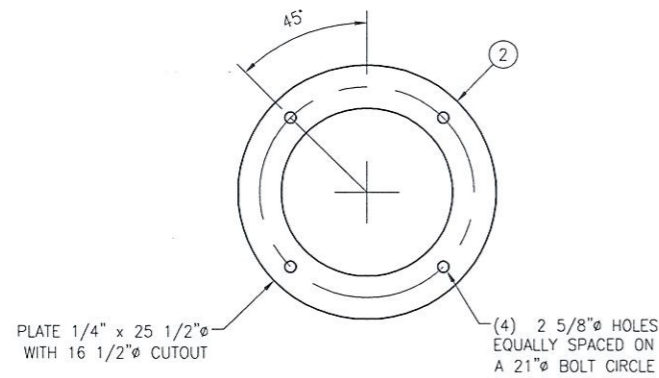
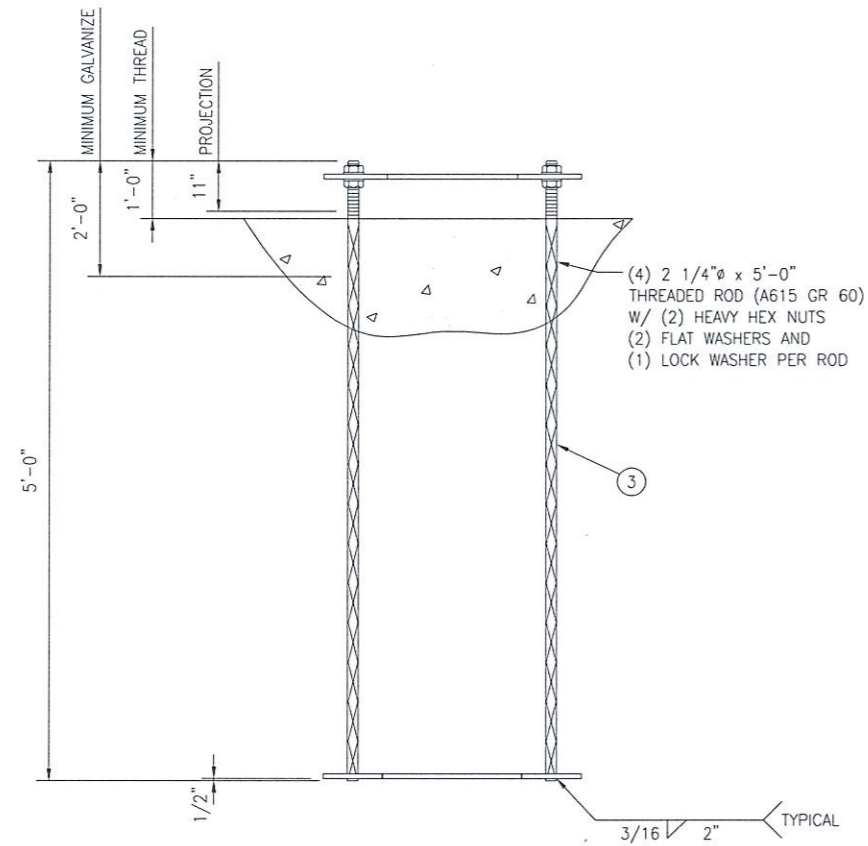
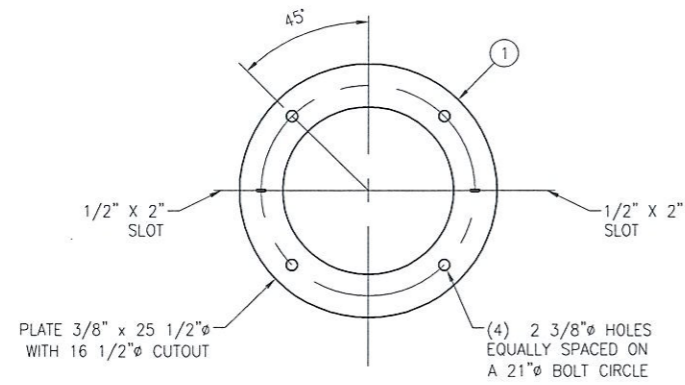


POST INSULATOR MOUNT DETAIL
(TYPICAL 3 PLACES)

1	JHU	JRS	JRS	06/02/10
REV	DRAWN	CHECKED	APPROVED	DATE

1501 INDUSTRIAL BLVD.
CLAREMORE, OKLAHOMA 74017
PH: 918-283-4004
FAX: 918-283-4005
WWW.PELCOSTRUCTURAL.COM

CUSTOMER:	HD SUPPLY UTILITIES		
AGENT:			
DESCRIPTION:	PO. NO.: 540378-00	PROJ. NO.: TONNECE SUBSTATION	
DRAWN BY:	BO	CHECKED BY:	JRS
		APPROVED BY:	JRS
		DATE:	4/30/10
TITLE:	GRAND RIVER DAM AUTHORITY 69kV H-FRAME LINE TERMINATION STRUCTURE 513		
JOB NUMBER	DRAWING NUMBER	SHEET NUMBER	REV
2460	246006b	6b of 32	1

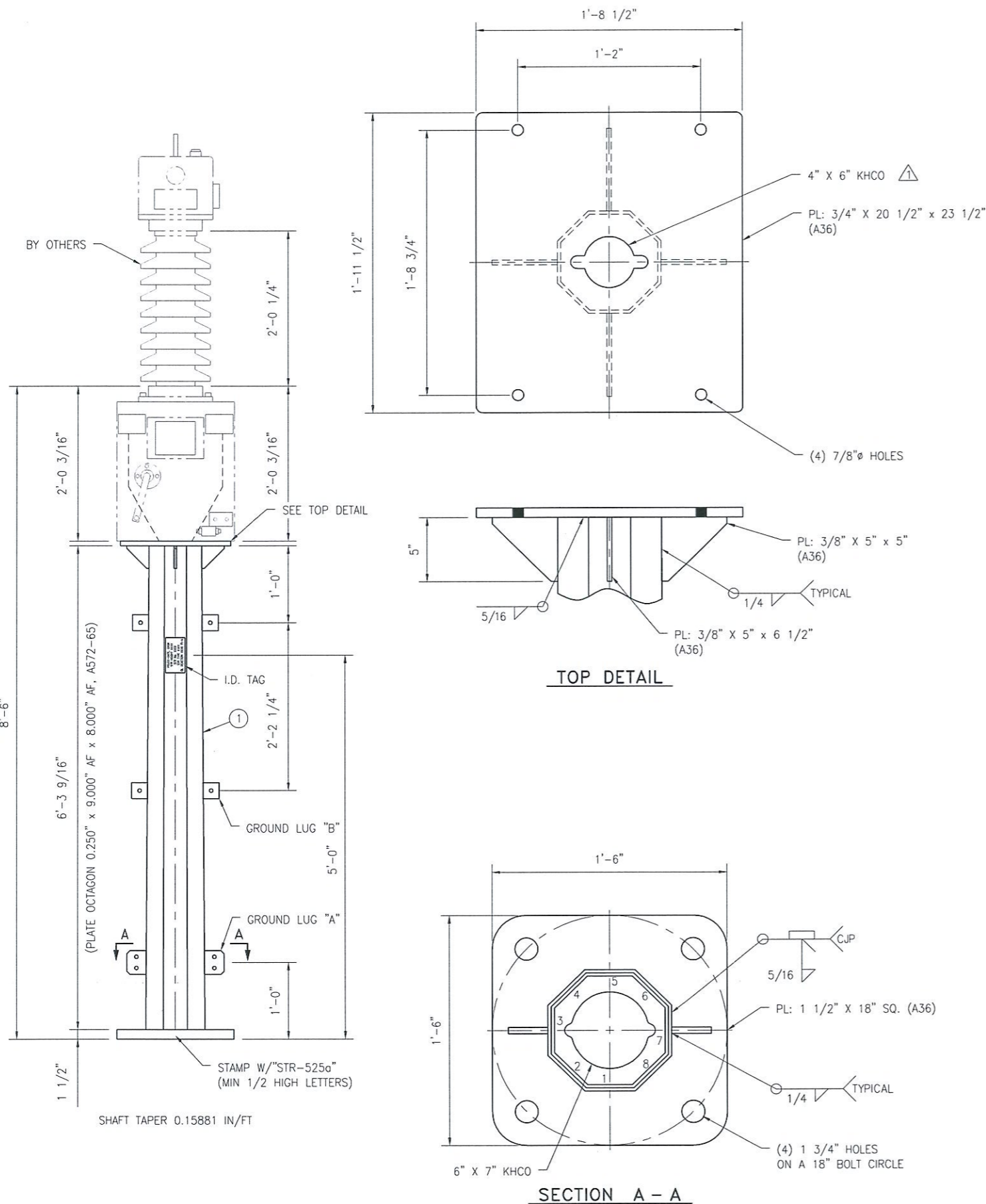


Bill Of Material (Material Shown For One Unit), 2 Req'd

Item	Qty.	Mark No.	Description	Unit Weight	Total Weight
①	1	T21206A	Top Template: 3/8" x 25 1/2" Dia. w/ (4) 2 3/8" Hls @ 21" BC	29.7	29.7
②	1	T21210A	Bot Template: 1/4" x 25 1/2" Dia. w/ (4) 2 5/8" Hls @ 21" BC	19.5	19.5
③	4		Anchor Bolts: 2 1/4" x 5'-0" Lg. (A615 Gr-60)	70.2	280.8
	8		2 1/4" Hex Nuts	4.2	33.6
	8		2 1/4" Flat Washer	1.1	8.8
	4		2 1/4" Lock Washer	0.5	2.0
Total:					374.4

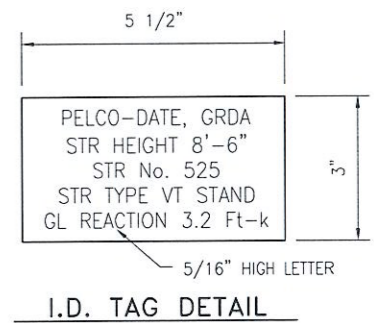
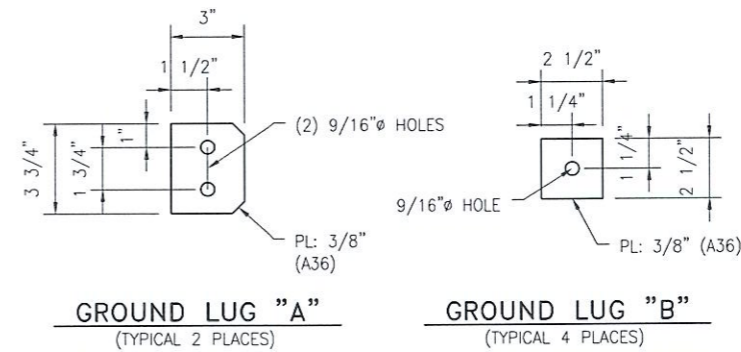
FOR RECORD ONLY
 JUL 0 1 2010

		1501 INDUSTRIAL BLVD. CLAREMORE, OKLAHOMA 74017 PH: 918-283-4004 FAX: 918-283-4005 WWW.PELCOSTRUCTURAL.COM		
		CUSTOMER: HD SUPPLY UTILITIES		
AGENT:		DESCRIPTION: PO. NO.: 540378-00 PROJ. NO.: TONNECE SUBSTATION		
DRAWN BY: BO	CHECKED BY: JRS	APPROVED BY: JRS	DATE: 4/30/10	
TITLE: GRAND RIVER DAM AUTHORITY ANCHOR CAGE DETAIL STRUCTURE 513				
JOB NUMBER	DRAWING NUMBER	SHEET NUMBER	REV	
2460	246006c	6c OF 32	0	
REV	DRAWN	CHECKED	APPROVED	DATE



Bill Of Material					
Item	Qty. (3)	Mark No.	Description	Unit Weight	Total Weight
①	1	STR-525a	Shaft: 9" AF x 8" AF x 14" x 6' - 3 9/16" Lg.	410.0	410.0
				Total	410.0

FOR RECORD ONLY
JUL 01 2010



GENERAL NOTES:

1. ALL SEAM WELDS TO BE 60% PENETRATION EXCEPT AS NOTED.
2. ALL LONGITUDINAL WELDS WITHIN 3" OF FLANGE AND BASEPLATE WELDS SHALL REQUIRE COMPLETE FUSION AND COMPLETE JOINT PENETRATION.
3. ALL WELDING TO BE PER PELCO STANDARD 2.1.1.
4. ALL QUALITY AND TOLERANCE PER PELCO STANDARD 2.1.2.
5. SEE SHEET 32 FOR ANCHOR BOLT & SETTING TEMPLATE.

		1501 INDUSTRIAL BLVD. CLAREMORE, OKLAHOMA 74017 PH: 918-283-4004 FAX: 918-283-4005 WWW.PELCOSTRUCTURAL.COM	
		CUSTOMER: HD SUPPLY UTILITIES	
AGENT:		PROJ. NO.: TONNECE SUBSTATION	
DESCRIPTION:		DATE: 4/30/10	
DRAWN BY: BO	CHECKED BY: JRS	APPROVED BY: JRS	DATE: 4/30/10
TITLE: GRAND RIVER DAM AUTHORITY 69kV VT STAND STRUCTURE 525			
JOB NUMBER 2460	DRAWING NUMBER 246005c	SHEET NUMBER 5c OF 32	REV 0

REV	DRAWN	CHECKED	APPROVED	DATE